



Steam - Water Mixers ADCAMIX MX 20

DESCRIPTION

The steam/water Adcamix mixers provide cheap, instant source of low pressure hot water by utilising existing steam and cold water supplies.

The mixer incorporates a safety device to ensure that live steam cannot accidentally be ejected, even if for some reason the cold water supply fail .

The temperature of water at the outlet of the Adcamix is easily controlled by using water and steam valves fitted to the inlets.

Connections are female screwed .

MAIN FEATURES

Safety device against accidentally steam ejection

Non return valves included

Complete stainless steel construction

Quiet operation

OPTIONS:

Alternative steam valve if live steam is required , e.g. for sterilisation.
Stainless steel pedestal.

ACCESSORIES:

Spray gun
Couple of steam/water valves
Hot water/steam hose
Stainless suspension for hose

USE :

Saturated steam and cold water.

AVAILABLE

MODELS :

MX 20

SIZES :

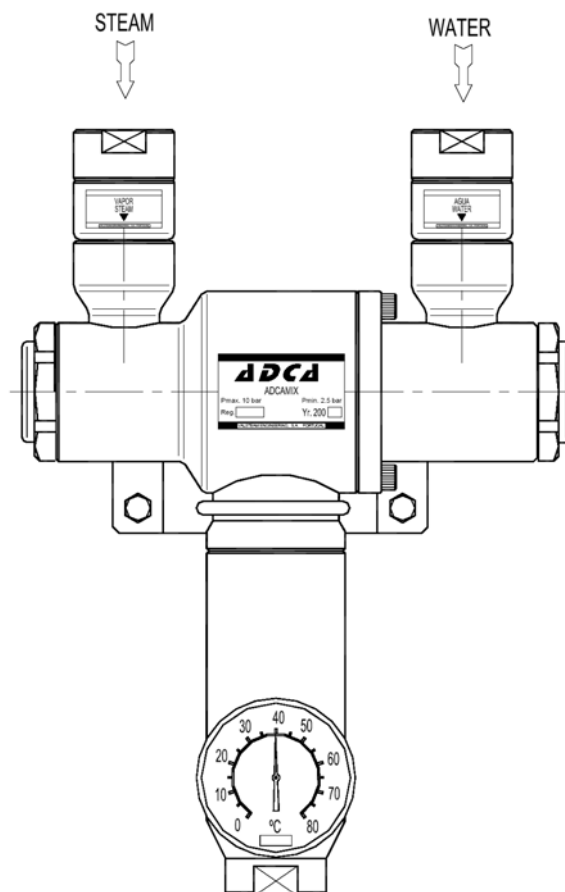
3/4" x 3/4"

CONNECTIONS :

Female screwed ISO 7/1 Rp (BS21)

INSTALLATION :

Vertical wall installation.
See IMI installation and maintenance instructions.



APPLICATION LIMITS :

Min.steam pressure - 2.5 bar

Max.steam pressure - 10 bar

Steam pressure equal to or no more than 3 times the water one.

How to order : i.e. Adcamix DN 3/4"

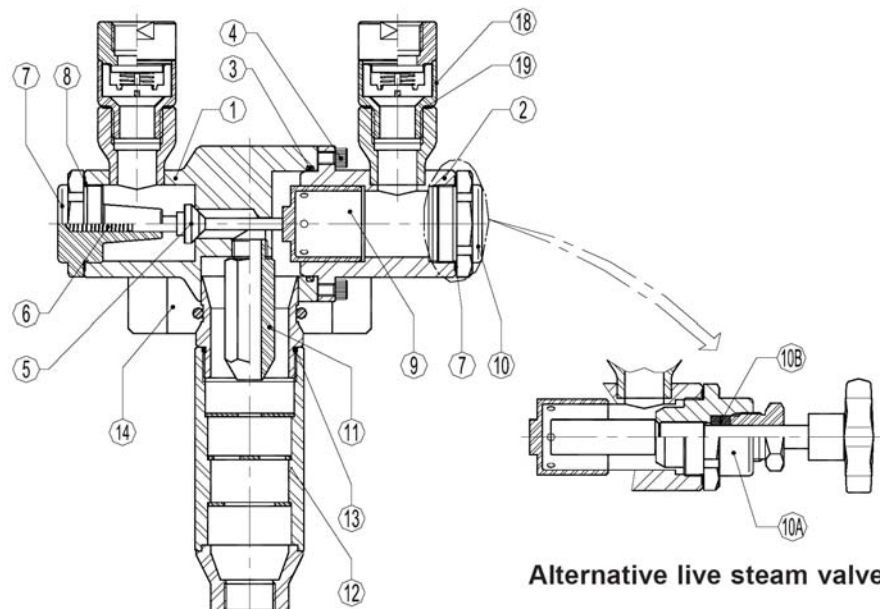
FLOW RATE CAPACITY - HOT WATER FLOW l/h

STEAM PRESSURE bar	HOT WATER OUTLET TEMPERATURE						
	40°C	50°C	60°C	70°C	80°C	90°C	95°C
2.5	1900	1400	1150	900	700	650	600
3	2250	1600	1230	1030	900	800	700
4	2700	2000	1550	1250	1000	850	800
5	3250	2300	1800	1500	1250	900	850
6	3900	2900	2250	1800	1500	1200	1100
7	4200	3100	2400	1950	1600	1300	1200
8	4800	3500	2700	2100	1800	1550	1280
9	5200	3900	3000	2450	2000	1700	1600
10	5900	4100	3250	2700	2250	1900	1750

MATERIALS

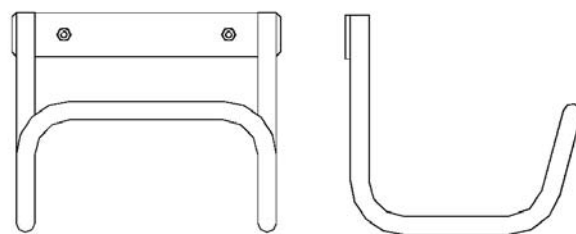
POS.	DESIGNATION	MATERIAL
1	STEAM BODY	STAINLESS STEEL
2	WATER BODY	STAINLESS STEEL
3*	GASKET	VITON
4	BOLTS	STAINLESS STEEL
5*	STEAM VALVE	ST. STEEL/PTFE
6*	VALVE SPRING	STAINLESS STEEL
7	STEAM COVER	STAINLESS STEEL
8*	GASKET	STAINLESS STEEL
9*	PISTON	STAINLESS STEEL
10	WATER COVER	STAINLESS STEEL
10A	STEAM VALVE	STAINLESS STEEL
10B*	PACKING	PTFE
11	STEAM NOZZLE	STAINLESS STEEL
12	MIXING CHAMBER	STAINLESS STEEL
13	GASKET	VITON
14	SUPPORT	STAINLESS STEEL
18*	CHECK VALVE	STAINLESS STEEL
19*	GASKET	PTFE

*Available spare parts.

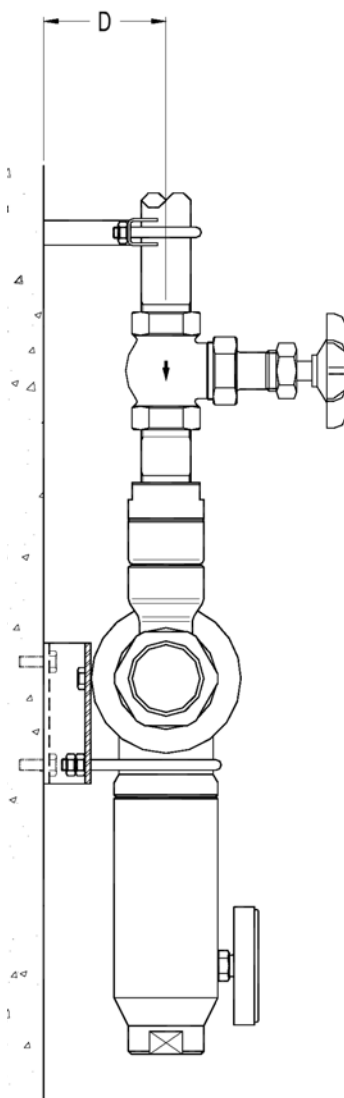
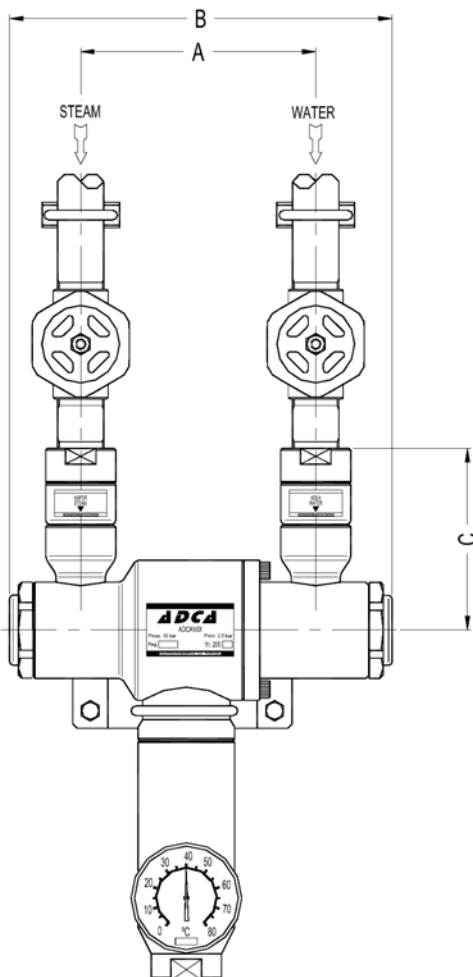


DIMENSIONS (mm)

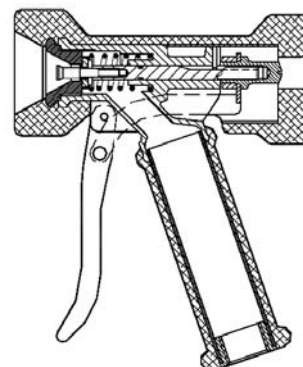
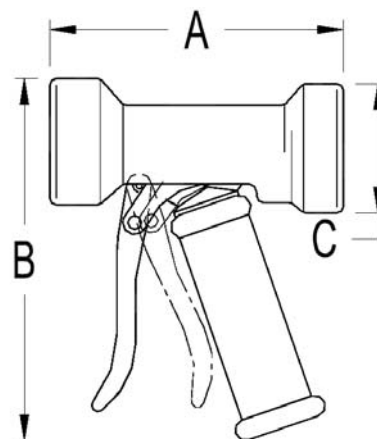
DN	A	B	C	D	Kg
3/4"	135	220	105	65	6.5



Stainless steel suspension for hose



Spray gun SG 20



INSTALLATION AND MAINTENANCE INSTRUCTIONS

MX20 - STEAM - WATER MIXERS ADCAMIX

GENERAL

1. These instructions must be carefully read before any work involving products supplied by VALSTEAM ADCA ENGINEERING S.A. is undertaken.

2. The installation procedure is a critical stage in a life of a mixing valve and care should be taken to avoid damage to the valve or equipment.

Warning !

- At start up , the presence of small particles in the water (dirt, scale, weld splatters, etc) may cause an unperfect closure of the seat . If this occur, proceed to an accurate cleaning.

- Do not touch the equipment without appropriate protection during working operation because it may conduct heat if the used fluid is at high temperature.

- Before starting maintenance be sure that the equipment is not pressurized or hot .

- The equipments must be used within the working temperature and pressure limits laid down for them, otherwise they may fail (refer to nameplate and/or IS- Information Sheet).

- Do not remove the nameplate attached to the equipment. Serial number and other useful information is stamped on it.

INSTALLATION

1. Before to install remove plastic covers placed on flanges or connection ends. The equipment has an arrow or Inlet/Outlet designations. Be sure that it will be installed on the appropriate direction

2. The MX20 must be installed in a vertical position with the hot water outlet connection at the bottom

3. To automatically remove condensate from line thus eliminating water hammer when the MX20 is first put into use or after long periods of inactivity , an Adca steam trap must be installed in piping immediately ahead of steam valve (see typical installation). Condensate shall be connected to the condensate recover system.

MAINTENANCE

1. The ADCAMIX MX20 steam - water mixers do not require any particular maintenance. Cleaning of the internals may become necessary from time to time. The cleaning intervals depend on the degree of contamination of the fluids. Examine steam valve nr.5 and seat to ascertain the extend of any damage or service wear. If necessary replace valve and spring nr.5 and 6 and clean piston nr.9.

2. For further information refer to the relevant IS (Information Sheet) or consult our Sales Office.

Installation limits :

Min. steam pressure - 2,5 bar

Max. steam pressure - 10 bar

Steam pressure equal to or no more than 3 times the water one.

PARTS LIST FOR MX20 - ADCAMIX

Code	Designation	Size	Pos.Nr.	Qty.
A.95.7050.020	Valve, spring & gasket	3/4"	5,6,8	1
A.95.7050.120	Piston & gasket	3/4"	8,9	1
A.95.7050.220	Check valve	3/4"	18,19	2

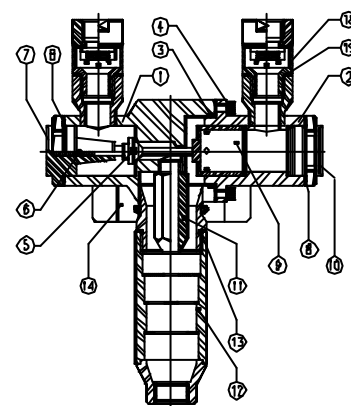
Recommended tightening torques :

Pos.Nr.	Size	Nm
Nrs.7,10	3/4"	80

CE Marking :

This product have been designed for use on steam and water which are in Group 2 of the PED-European Pressure Equipment Directive 97/23/EC and it comply with those requirements.

The product fall within category SEP and must not be CE marked.



ADCAMIX Typical Installation

